

Brief report

Does physical activity influence semantic memory activation in amnesic mild cognitive impairment?

J. Carson Smith^{a,c,f}, Kristy A. Nielson^{b,c}, John L. Woodard^d, Michael Seidenberg^e, Matthew D. Verber^f, Sally Durgerian^c, Piero Antuono^c, Alissa M. Butts^b, Nathan C. Hantke^b, Melissa A. Lancaster^e, Stephen M. Rao^{g,*}

^a Department of Health Sciences, University of Wisconsin–Milwaukee, PO Box 413, Milwaukee, WI 53201, USA

^b Department of Psychology, Marquette University, PO Box 1881, Milwaukee, WI, 53201, USA

^c Department of Neurology, Medical College of Wisconsin, 8701 Watertown Plank Road, Milwaukee, WI 53226, USA

^d Department of Psychology, Wayne State University, 5057 Woodward Ave, Detroit, MI 48202, USA

^e Department of Psychology, Rosalind Franklin University of Medicine and Science, 3333 Green Bay Rd, North Chicago, IL 60064, USA

^f Clinical and Translational Science Institute, Medical College of Wisconsin, 8701 Watertown Plank Road, Milwaukee, WI 53226, USA

^g Sclay Center for Cognitive Neuroimaging, Neurological Institute, Cleveland Clinic, 9500 Euclid Ave/U10, Cleveland, OH 44195, USA

ARTICLE INFO

Article history:

Received 18 November 2010

Received in revised form 8 April 2011

Accepted 8 April 2011

Keywords:

Exercise
Alzheimer's disease
Cognition

ABSTRACT

The effect of physical activity (PA) on functional brain activation for semantic memory in amnesic mild cognitive impairment (aMCI) was examined using event-related functional magnetic resonance imaging during fame discrimination. Significantly greater semantic memory activation occurred in the left caudate of High- versus Low-PA patients, ($P = 0.03$), suggesting PA may enhance memory-related caudate activation in aMCI.

© 2011 Elsevier Ireland Ltd. All rights reserved.

1. Introduction

Amnesic mild cognitive impairment (aMCI) is a high risk state for Alzheimer's disease (AD), with 80% of individuals with aMCI progressing to AD over a 6-year period (Petersen et al., 2001). Effective therapies are needed for preserving cognitive and brain function in aMCI. Physical activity (PA) has been promoted as one such promising intervention (Baker et al., 2010; Smith et al., 2011). PA enhances neuropsychological test performance in healthy older adults (Lautenschlager et al., 2008), improves semantic memory retrieval in aMCI patients (Baker et al., 2010), and is associated with greater semantic memory-related brain activation in healthy older adults, particularly in those carrying increased AD risk from the apolipoprotein E-epsilon4 (APOE-ε4) allele (Smith et al., 2011). The objective of this study was to expand the literature by examining the effects of PA on brain activation during semantic memory in aMCI patients. Based

on our previous findings, we hypothesized greater PA would be associated with greater activation in aMCI.

2. Method

Eighteen participants who met Petersen criteria (Petersen et al., 2001) for aMCI were studied. A comprehensive neuropsychological battery was administered (see Table S1; Smith et al., 2011). Frequency and intensity of leisure-time PA was measured using the Stanford Brief Activity Survey (SBAS) (Taylor-Piliae et al., 2006). Participants indicating ≤ 2 days of low-intensity PA were classified as Low-PA ($n = 9$) while participants indicating ≥ 3 days per week of moderate to vigorous PA were classified as High-PA ($n = 9$). The Institutional Review Board at the Medical College of Wisconsin approved the study, and written informed consent was obtained according to the Declaration of Helsinki.

Whole-brain, event-related functional magnetic resonance imaging (fMRI) was conducted on a General Electric (Waukesha, WI) Signa Excite 3.0 Tesla scanner using an echoplanar pulse sequence and high-resolution, three-dimensional spoiled gradient-recalled at steady-state (SPGR) anatomic images (Smith et al., 2011). The semantic memory task included 30 names of famous persons (e.g., Frank Sinatra) and 30 names of non-famous individuals where each name was presented for 4 s and participants indicated famous or unfamiliar by finger key-press (Douville et al., 2005). The 60 name trials were randomly interspersed

* Corresponding author. Tel.: +1 216 444 1025; fax: +1 216 445 7013.

E-mail addresses: jcarson@uwm.edu (J.C. Smith), kristy.nielson@marquette.edu (K.A. Nielson), john.woodard@wayne.edu (J.L. Woodard), michael.seidenberg@rosalindfranklin.edu (M. Seidenberg), matthew.verber@gmail.com (M.D. Verber), sallyd@mcw.edu (S. Durgerian), pantuono@mcw.edu (P. Antuono), alissa.butts@marquette.edu (A.M. Butts), nathan.hantke@marquette.edu (N.C. Hantke), melissa.lancaster@my.rfums.org (M.A. Lancaster), raos2@ccf.org (S.M. Rao).

with 20 4-s fixation trials. The imaging run began and ended with 12 s of fixation (run-time 344 s).

Functional images were analyzed with AFNI (Cox, 1996). Deconvolution was used to extract separate hemodynamic response functions (HRFs, 0–16 s post-stimulus) for famous and unfamiliar names from the time-series (correct trials only). Area under the curve (AUC) was calculated by summing the HRFs at 4, 6, and 8 s post-trial onset. Statistical parametric maps were generated for each group where the % AUC for famous names differed significantly from unfamiliar names. An individual voxel probability threshold ($t(6) = 4.308$, $P < 0.005$) was coupled with a minimum cluster volume threshold of 0.731 ml, equivalent to a whole brain family-wise error threshold of $P < 0.05$. A functional region of interest (fROI) analysis was conducted to evaluate potential group differences in the magnitude of the BOLD response in functionally active regions. An fROI map was generated for the combined sample using a disjunction mask. Any voxel deemed “activated” by the Famous – Unfamiliar name subtraction in at least one of the two groups contributed to the final fROI map. For each participant, an “averaged HRF” was calculated for all voxels within an fROI. AUC (4, 6, and 8 s post-stimulus onset) in each fROI served as the dependent variable (see Smith et al., 2011). One-way analysis of variance (ANOVA) was performed to compare % AUC in each fROI between PA groups with a one-tailed level of significance of $P < 0.05$.

3. Results

The High-PA and Low-PA groups did not differ significantly in age, sex, education, family history of AD, APOE gene status, depressive symptoms, neuropsychological performance, or fame discrimination performance ($>86\%$ for both groups) (see Table S1). The volume of activation was 25% greater in the High-PA group (see Fig. S1 and Table S2). Brain activation related to semantic memory processing (famous $>$ unfamiliar) occurred in six fROIs. High-PA aMCI showed significantly greater intensity of activation in the left caudate compared to Low-PA aMCI (Mean (\pm S.D.): High-PA = 0.358 (0.151%); Low-PA = 0.149 (0.268%); $F(1,16) = 4.117$, $P = 0.03$; $\eta_p^2 = 0.205$) (see Fig. 1). Comparisons of the volume of the caudate nuclei demonstrated no group difference.

4. Discussion

These findings provide preliminary evidence that greater leisure-time physical activity is positively related to a greater general spatial extent of semantic memory activation and a greater intensity of activation in the left caudate in patients diagnosed with aMCI. It has been suggested that the caudate participates in a variety of cognitive functions through the augmentation of intentional actions and

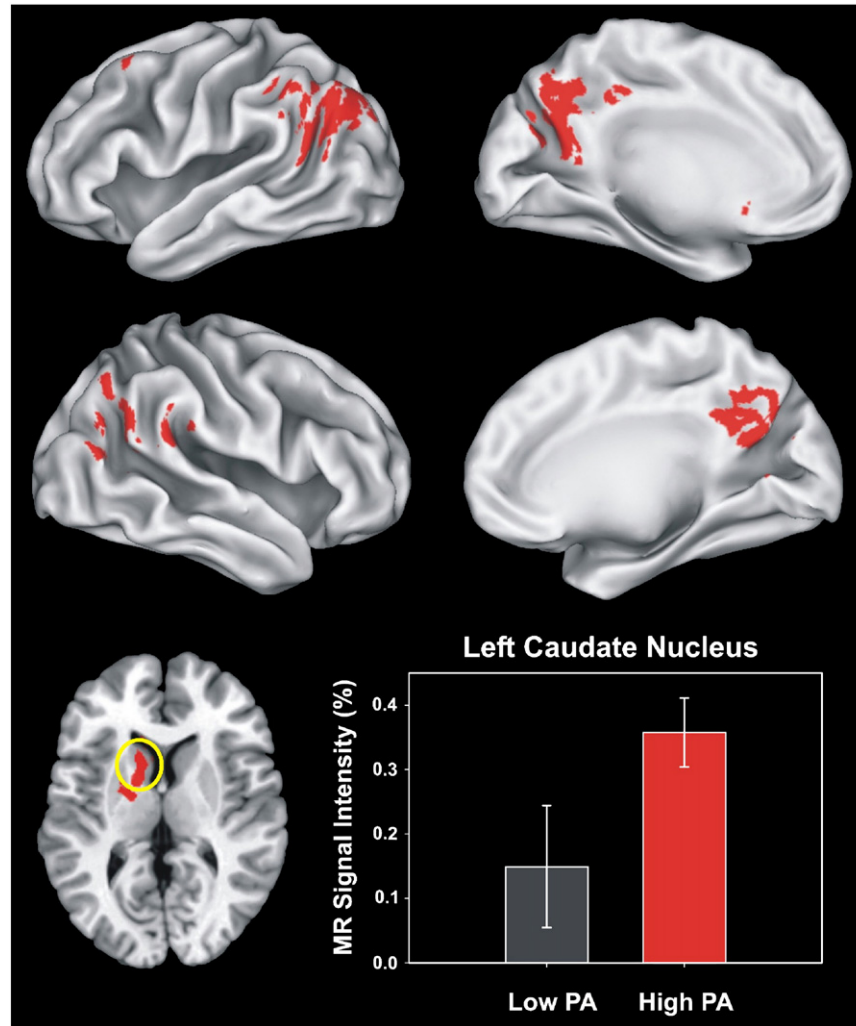


Fig. 1. Functional Regions of Interest (fROIs) derived from all regions activated in both groups based on the voxelwise analysis (see supplementary Fig. S1 and Table S2). The six regions of interest are shown in the top (left hemisphere) and middle (right hemisphere) panels. The two groups significantly differed only in activation (Famous $>$ Unfamiliar) of the left caudate region (circled in yellow, axial view in the lower left panel, $z = +10$ mm superior to the AC–PC line). The MR signal intensity difference (%AUC) between the Low-PA and High-PA groups in the left caudate region is shown in the lower right panel. Error bars = SEM.

cognitions, and the inhibition of competing motor programs and cognitive networks through closed loops that involve other basal ganglia structures and several frontal cortical regions (Crosson et al., 2007). The direct (augmentative) cortical loops are modulated by dopamine D1 receptor activity increasing the signal-to-noise ratio on the outputs of striatal spiny neurons. It has been suggested that D1 receptors serve to facilitate cognition by helping to prolong the activation of the cortical loops that support them (Crosson et al., 2007).

Changes in caudate volume are reportedly involved in the progression of MCI and may be affected by AD pathology (Smith et al., 2006; Hakamata et al., 2010). Our finding suggests that being physically active may help preserve activation of the caudate during semantic memory retrieval. While the mechanism for this effect is not clear, we hypothesize that PA may increase dopaminergic input (de Castro and Duncan, 1985) that augments the gain among frontostriatal closed loop networks and results in enhanced activation of the caudate during semantic memory retrieval (Crosson et al., 2007).

In previous work, greater physical fitness was related to larger left caudate volume in healthy 9- to 10-year-old children, although it was unrelated to flanker task performance (Browning, 2010). Baker et al. (2010) compared aerobic exercise training to a stretching control group in 33 aMCI patients and reported that exercise improved category fluency, an index of semantic memory retrieval. The current findings provide the first evidence of an association between functional activation of the left caudate during semantic memory and greater levels of PA in aMCI patients. These findings extend our previous report that enhanced semantic memory processing was observed in more physically active cognitively intact older adults, particularly in individuals who possessed the APOE-ε4 allele (Smith et al., 2011). While that study did not report caudate activation, our earlier work demonstrated caudate activation by our task in both cognitively intact adults (Seidenberg et al., 2009) and MCI patients (Woodard et al., 2009).

An important question is whether greater semantic memory activation reflects a compensatory response indicative of future cognitive decline, or whether this effect reflects a cognitive reserve that may be protective. In a longitudinal study of cognitively intact individuals at risk for developing AD, we showed that greater baseline fMRI semantic memory activation during famous name recognition was protective against cognitive decline 18 months later (Woodard et al., 2010). Collectively, these findings indicate that physical activity may enhance semantic memory activation in healthy older adults at risk for AD, and that these effects may be limited to the caudate nucleus in cognitively impaired older adults. Whether PA provides protection against future cognitive decline in aMCI is currently unknown.

Because the activations for the famous and unfamiliar names were subtracted, our finding cannot be attributed to common motor or sensory activation related to the visual perception of the names and the motor response. The groups were also equivalent on multiple demographic and cognitive performance factors, APOE status, and caudate volume. It is conceivable that other unmeasured factors, such as overall metabolic health, microvascular pathology, or other cognitive domains (e.g., executive function), differed between the two groups (see Fig. S1 and Table S2). This study is also limited by its cross-sectional design, its small sample, and the use of a self-report measure of leisure-time PA. We did not assess cardiorespiratory fitness. It is possible that the group differences in brain activation may result from increased cerebral perfusion and/or increased cerebral blood volume associated with PA (Pereira et al., 2007). It is important to note, however, that responses on the SBAS have been shown to be dose-dependently related to cardiovascular risk biomarkers and estimated energy expenditure (Taylor-Piliae et al., 2006).

In our previous studies of cognitively intact older adults at increased risk for AD, PA was related to greater volume and intensity of semantic memory activation (Smith et al., 2011), and greater semantic memory activation was a sign of cognitive stability over

18 months (Woodard et al., 2010). In this cross-sectional study in aMCI patients, we found that greater PA was associated with greater overall volume of activation and greater intensity of activation in the left caudate during semantic memory processing. However, it is not known if the ability to activate the caudate is protective against future decline in aMCI or if PA prospectively enhances brain function in aMCI and reduces conversion to AD. These hypotheses need to be tested prospectively in a larger sample of aMCI patients.

Supplementary materials related to this article can be found online at doi:10.1016/j.psychres.2011.04.001.

Acknowledgments

The authors thank Qi Zhang and Amelia Gander for their help with subject recruitment and data collection. This project was supported by NIH grant, R01 AG022304, awarded to SMR, the Medical College of Wisconsin General Clinical Research Center (M01 RR00058), and the Medical College of Wisconsin Advancing a Healthier Wisconsin Program. The content is solely the responsibility of the authors and does not necessarily represent the official views of the National Institute on Aging or the National Institutes of Health.

References

- Baker, L.D., Frank, L.L., Foster-Schubert, K., Green, P.S., Wilkinson, C.W., McTiernan, A., Plymate, S.R., Fishel, M.A., Watson, G.S., Cholerton, B.A., Duncan, G.E., Mehta, P.D., Craft, S., 2010. Effects of aerobic exercise on mild cognitive impairment: a controlled trial. *Archives of Neurology* 67, 71–79.
- Browning, G.G., 2010. A sign guideline that has considerable interpretation bias. *Clinical Otolaryngology* 35, 325–326.
- Cox, R.W., 1996. Afni: Software for analysis and visualization of functional magnetic resonance neuroimages. *Computers and Biomedical Research* 29, 162–173.
- Crosson, B., Benjamini, M., Levy, I., 2007. Role of the basal ganglia in language and semantics: supporting cast. In: Hart Jr., J., Kraut, M.A. (Eds.), *Neural Basis of Semantic Memory*. Cambridge University Press, New York, pp. 219–243.
- de Castro, J.M., Duncan, G., 1985. Operantly conditioned running: effects on brain catecholamine concentrations and receptor densities in the rat. *Pharmacology, Biochemistry, and Behavior* 23, 495–500.
- Douville, K., Woodard, J.L., Seidenberg, M., Miller, S.K., Leveroni, C.L., Nielson, K.A., Franczak, M., Antuono, P., Rao, S.M., 2005. Medial temporal lobe activity for recognition of recent and remote famous names: an event-related fMRI study. *Neuropsychologia* 43, 693–703.
- Hakamata, Y., Lissek, S., Bar-Haim, Y., Britton, J.C., Fox, N.A., Leibenluft, E., Ernst, M., Pine, D.S., 2010. Attention bias modification treatment: a meta-analysis toward the establishment of novel treatment for anxiety. *Biological Psychiatry* 68, 982–990.
- Lautenschlager, N.T., Cox, K.L., Flicker, L., Foster, J.K., van Bockxmeer, F.M., Xiao, J., Greenop, K.R., Almeida, O.P., 2008. Effect of physical activity on cognitive function in older adults at risk for Alzheimer disease: a randomized trial. *Journal of the American Medical Association* 300, 1027–1037.
- Pereira, A.C., Huddleston, D.E., Brickman, A.M., Sosunov, A.A., Hen, R., McKhann, G.M., Sloan, R., Gage, F.H., Brown, T.R., Small, S.A., 2007. An in vivo correlate of exercise-induced neurogenesis in the adult dentate gyrus. *Proceedings of the National Academy of Sciences of the United States of America* 104, 5638–5643.
- Petersen, R.C., Doody, R., Kurz, A., Mohs, R.C., Morris, J.C., Rabins, P.V., Ritchie, K., Rosser, M., Thal, L., Winblad, B., 2001. Current concepts in mild cognitive impairment. *Archives of Neurology* 58, 1985–1992.
- Seidenberg, M., Guidotti, L., Nielson, K.A., Woodard, J.L., Durgerian, S., Antuono, P., Zhang, Q., Rao, S.M., 2009. Semantic memory activation in individuals at risk for developing Alzheimer disease. *Neurology* 73, 612–620.
- Smith, A.G., Russell, J., Feldman, E.L., Goldstein, J., Peltier, A., Smith, S., Hamwi, J., Pollari, D., Bixby, B., Howard, J., Singleton, J.R., 2006. Lifestyle intervention for pre-diabetic neuropathy. *Diabetes Care* 29, 1294–1299.
- Smith, J.C., Nielson, K.A., Woodard, J.L., Seidenberg, M., Durgerian, S., Antuono, P., Butts, A.M., Hantke, N.C., Lancaster, M.A., Rao, S.M., 2011. Interactive effects of physical activity and apoe-ε4 on bold semantic memory activation in healthy elders. *NeuroImage* 54, 635–644.
- Taylor-Piliae, R.E., Norton, L.C., Haskell, W.L., Mahbouda, M.H., Fair, J.M., Iribarren, C., Hlatky, M.A., Go, A.S., Fortmann, S.P., 2006. Validation of a new brief physical activity survey among men and women aged 60–69 years. *American Journal of Epidemiology* 164, 598–606.
- Woodard, J., Seidenberg, M., Nielson, K.A., Smith, J.C., Antuono, P., Durgerian, S., Guidotti, L., Zhang, Q., Butts, A., Hantke, N., Lancaster, M., Rao, S.M., 2010. Prediction of cognitive decline in healthy older adults using fmri. *Journal of Alzheimer's Disease* 21, 871–885.
- Woodard, J.L., Seidenberg, M., Nielson, K.A., Antuono, P., Guidotti, L., Durgerian, S., Zhang, Q., Lancaster, M., Hantke, N., Butts, A., Rao, S.M., 2009. Semantic memory activation in amnesic mild cognitive impairment. *Brain* 132, 2068–2078.